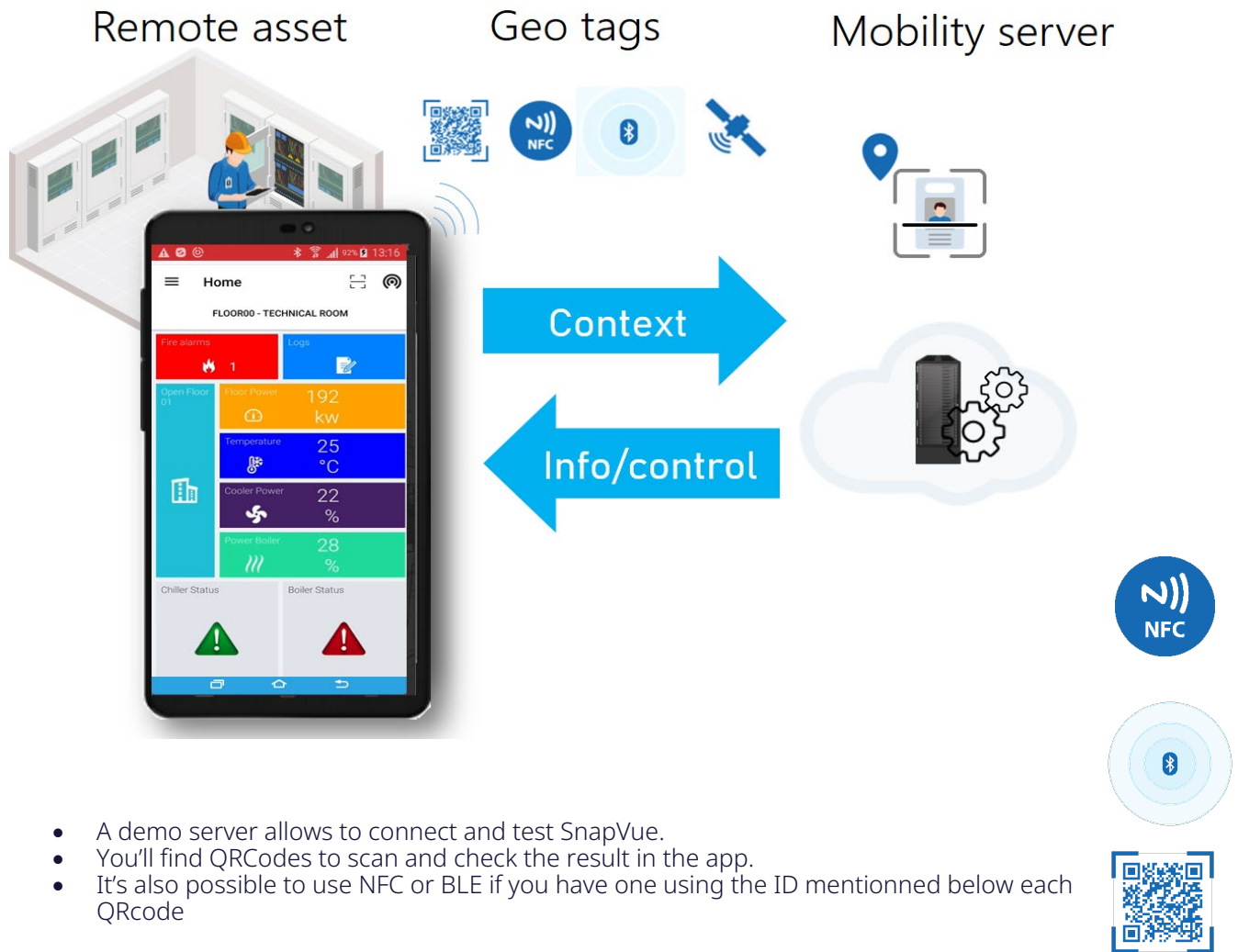


DEMO SNAPVUE

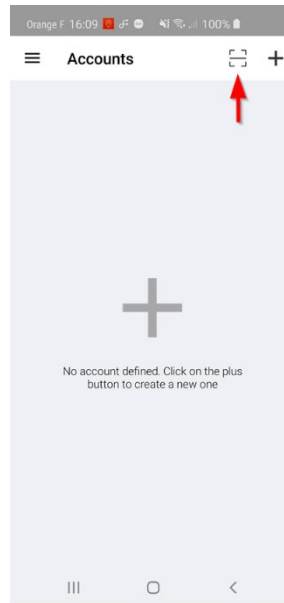


SnapVue is a location based mobile app which uses geo-tags such as BLE (Beacon Low Energy), NFC, QRcode to localize the smart device and display relevant information and control to the mobile user.



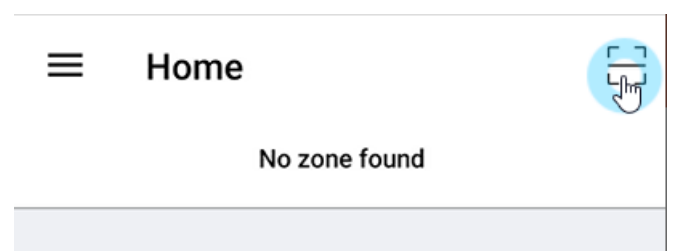
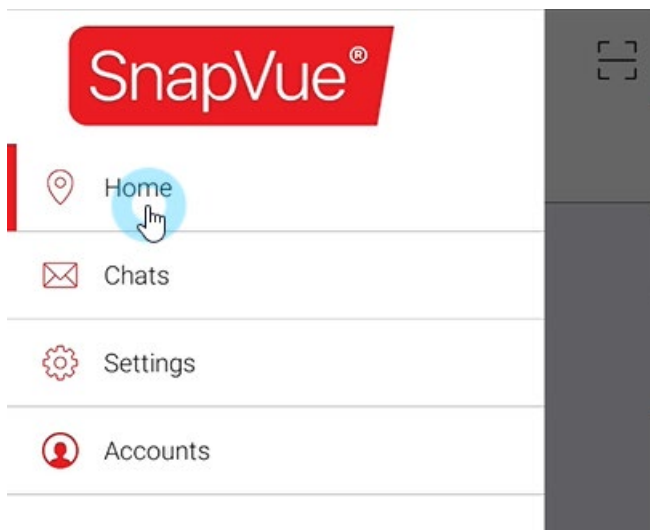
1 - Open SnapVue

Scan the QRcode to connect to demo server



2 - Test!

Open menu "HOME" and scan QRcodes





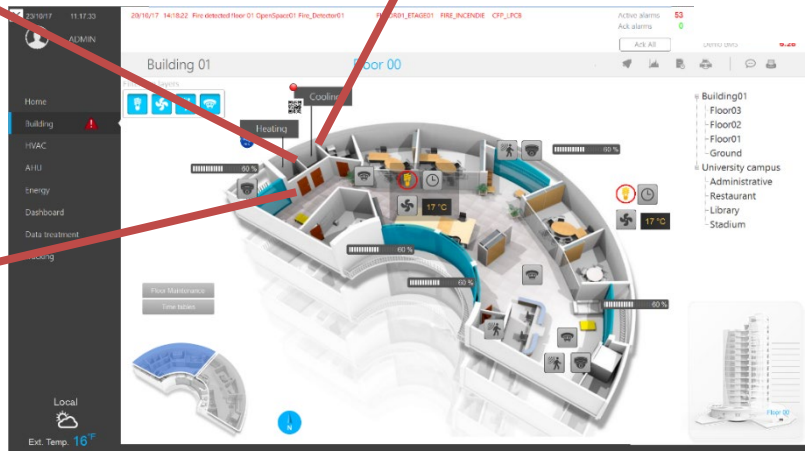
Ground floor



Boiler
ID : Boiler



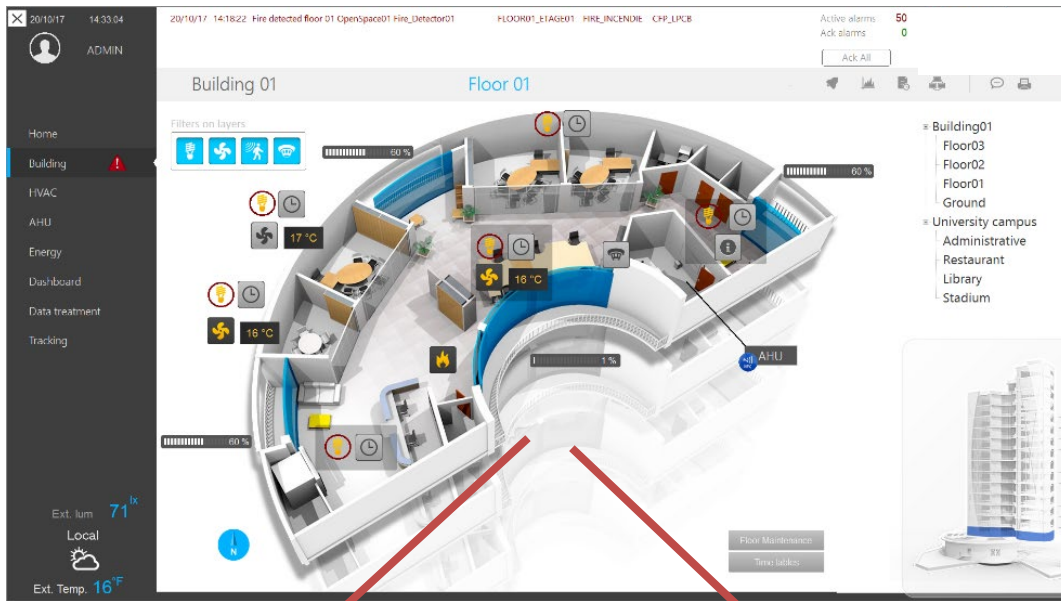
Chiller
ID : QRCode_Chiller



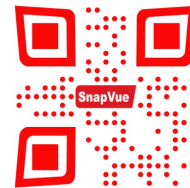
Technical room

ID : fda50693-a4e2-4fb1-afcf-c6eb07647825-7-1

Floor 01

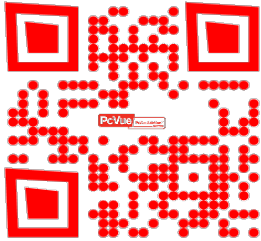


TechRoom
ID : fda50693-a4e2-4fb1-afcf-c6eb07647825-2-1

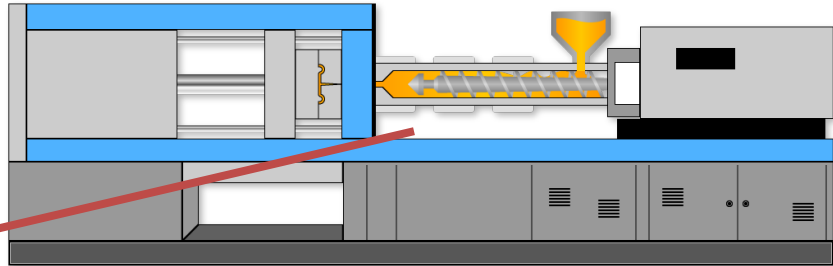


Air Handler Unit
ID : AHU

Machine 01



ID: M01



Production / SETUP PRODUCTION NEW BATCH

ADMIN Machine 01

Workshop overview Production Monitoring Parameters Reporting Recipes

Manufacturer: Engel Status: Ejection Piece: 00:00:08

BATCH N°: 10002968 Product: SEGAL RT1006

Insert A: TPE Insert B: Nickel Base: Glass TRS (%): 8.5 Mould ID: 111

Placed: 56 Cycles: 7 Intermix time: 00:03:44

Production Last cycle: 03/26/18 11:37:45

IFS: 98% Pieces Produced: 8/56

Cycle done: 1 / 7 Avg. cycle time: 05:28

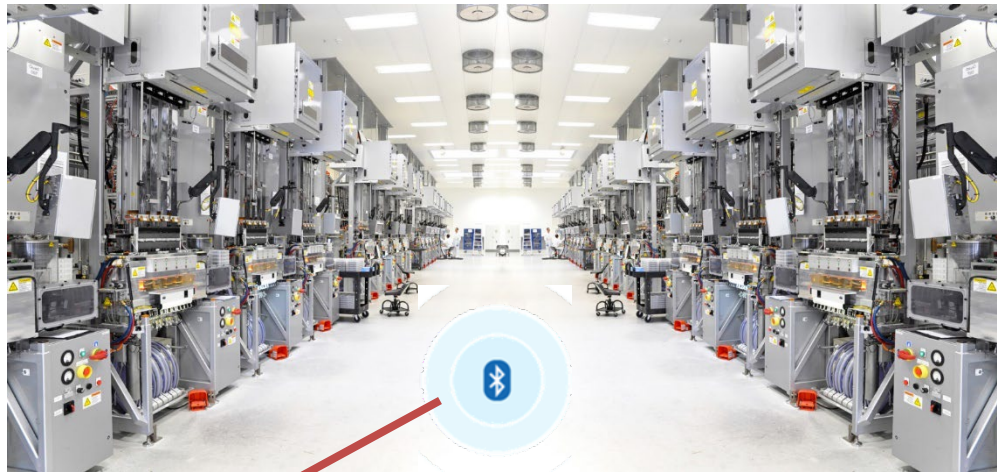
Custom: 18.00 mm Filling time: 37.00 s

Back pressure: 2% Mould rear temp: 232 °F

Plast. time: 418.00 s Mould front temp: 316 °F

Buttons: Closing, Plastification, Injection, Cooling, Ejection

11:37:46 26/03/18



Site 01 Line 01

WebVue_EN

Workshop overview Production Monitoring Parameters

Line 01

Machine #	Batch #	Product type	Insert A	Insert B	Resin	Base	Mold	TRS (%)	Avg. Cycle time
IMM13	10002843	SYS-R2	ABS	Class	Metal	E5	100	95	166 s
IMM14	10002941	SEGAL RT1006	TPE	Nickel	Glass	8.5	104	91	216 s
IMM15	10003122	PANAMIR 221	PC	Class	Nickel	7	105	91	171 s
IMM16	10000701	SEGAL-RT1006	TPE	Nickel	Glass	8.5	104	91	222 s
IMM17	10000741	SYS-R2	ABS	Glass	Metal	6.5	107	96	413 s

10:29:38 18/12/20

Info line

ID: fda50693-a4e2-4fb1-afcf-c6eb07647825-1-2

Farm 01
ID: fda50693-a4e2-4fb1-afcf-c6eb07647825-3-1



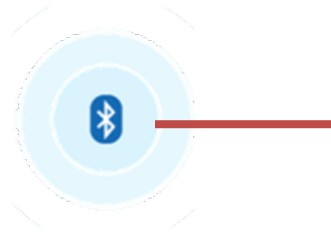
Turbine 1
ID: Turbine



Turbine 3



Turbine 2



WindPowerPlant 01 | WindTurbine 03

ADMIN ADMIN

WindTurbine

Substation

Transformer

Single line diagram

Mobile users

Site01.WindTurbine03

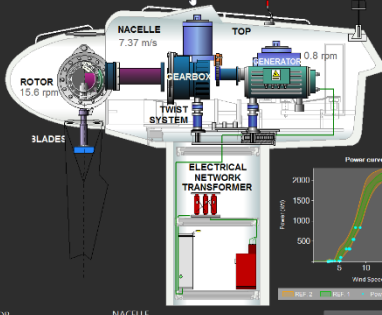
ON

REFERENCE: G47
Manufacturer: GAMESA

Last update: 29/08/18 16:56:52

Apparent Power	7 VA	RPM	0.8 rpm
Active Power	546 kW	Reactive Power	1 kVAR

PITCH	YAW	MOTOR	NACELLE
Brake: ON	Angle Blade: 1. 38.55 °	Rotor Speed: 15.6 rpm	Wind Speed: 7.37 m/s
Motor: OFF	2. 36.62 °	Max. RPM: 9.8 rpm	Wind Direction: 61.2 °
	3. 52.68 °	Min. RPM: 16.98 rpm	Temperature: 24.79 °C
		Avg. RPM: 13.76 rpm	Humidity: 40.61 %
			Atm Press: 1026.74 hPa



Power curve graph showing Power (kW) vs Wind Speed (m/s)

16:56:54
29/08/18

07 Alarms ON

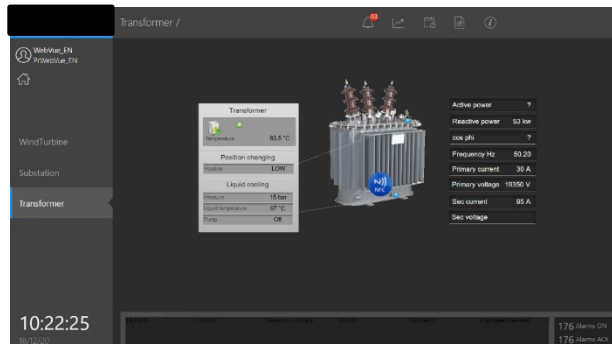
00 Alarms ACK



Transformer

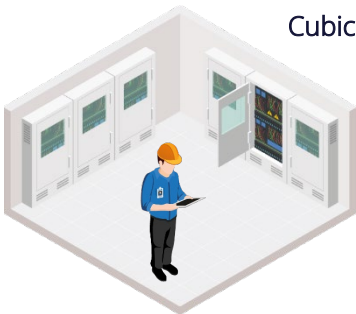
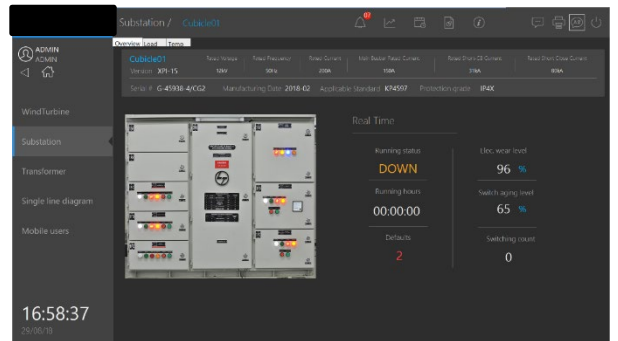


ID: Transformer



Sub station

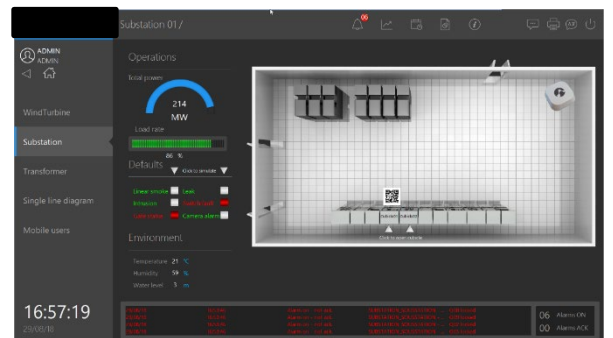
ID: fda50693-a4e2-4fb1-afcf-c6eb07647825-4-1



Cubicle



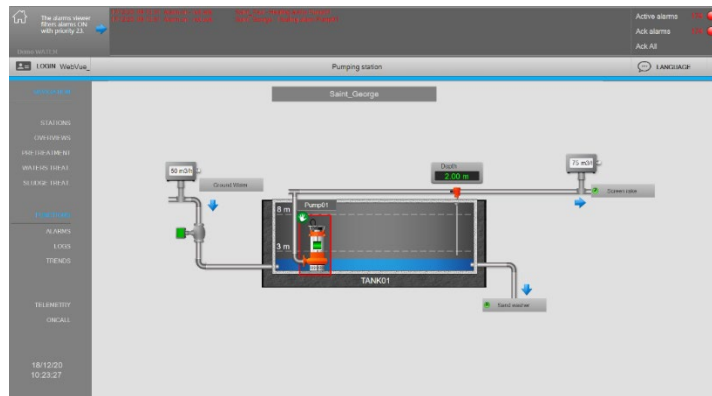
ID: QRCode_DB



Pumping station



ID: Water station



Water pump



ID: Water_pump