



# PcVue SCADA HAS BEEN SELECTED TO CONTROL ALTO JAHUEL SUBSTATION, THE LARGEST ONE OF CHILE NATIONAL ELECTRIC SYSTEM

With almost 10,000 kilometers of lines and more than 60 substations, from the Arica y Parinacota Region to the Los Lagos Region, Transelec is the main supplier of high voltage systems in Chile. More than 70 years of experience in the energy sector support its vast expertise, allowing them to provide jobs to more than 500 workers. They also represent a fundamental piece in the country's progress, since they are the main electric power transmission company in Chile and transport the energy that reaches 98% of the population living from the north to most of the south, with an 84.5% share of the National Electric System.

Transelec's work is a continuous reinforcement of the electrical system in order to make it increasingly robust and thus enable the connection of renewable energies, while advancing towards the decarbonization of the energy matrix. Transelec is owned by a consortium made up of the Canadian Pension Plan Investment Board, British Columbia Investment Management Corp., Public Sector Pension Investment Board, and China Southern Power Grid International.

Transelec's main task is to provide an uninterrupted electrical system in which energy is transported through high voltage transmission lines from generation sources to cities and industrial and mining users. Substations convert the energy to low voltage for distribution to end users, contributing to the improvement of their quality of life and by extension to the country's development.

Among its various substations, the Alto Jahuel substation stands out, located in the Metropolitan Region of Santiago, it is the substation with the largest capacity in the National Electric System, with an installed capacity of 2,554 MVA. It also has yards with all the voltage levels that exist in the Chilean transmission system: 500kV, 220kV, 154kV, 110kV, 60kV and 13.2kV.



## BUSINESS OBJECTIVE

- ✔ Guarantee of computer security for operational continuity and safety of collaborators and contractors
- ✔ Scalable and multifunctional platform allowing the integration of future requirements

## ELECTRICAL SCADA PROJECT

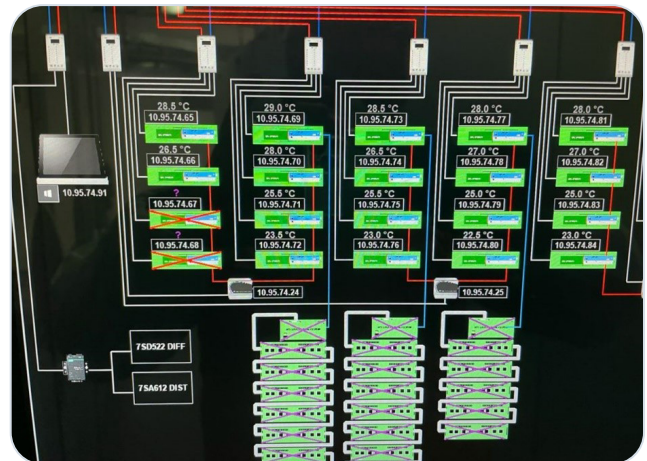
Being specialists in the development and implementation of SCADA systems, SCADATECH was chosen by Transelec for this project. As part of its comprehensive engineering solutions for electrical power systems, the company selected the versatile platform of PcVue Solutions for the automation of the Alto Jahuel substation, allowing the monitoring and control of its 7 yards.

Initially, the customer did not have local HMIs to monitor the yards from the control rooms associated with each of them, so the operations had to be performed directly on the control equipment. Due to this, SCADATECH proposed PcVue's SCADA solution to provide a scalable and multifunctional platform that would allow the integration of future requirements and reduce the risk for operators when executing maneuvers by transferring operations to the control rooms of each power yard.

Technically, the application allows direct integration in MMS protocol standard 61850, in addition to the DNP 3.0 protocol, which was chosen as the basis for the project, as well as the use of existing adaptable programming within the PcVue platform. It provides the flexibility to display the dynamic coloration of the voltage levels in the substation's single-line diagrams according to the standard used by Transelec, in which different types of alarms are indicated according to the aforementioned coloration.

Likewise, the HMI stations allow the visualization in real time of status and measurements of the electrical system. It also carries out the remote control or operation towards the IED field equipment, having total control and supervision of the existing electrical system. For the control and supervision of the different displays: general unilinear, alarms and events panel, communications diagram and other areas, a menu was configured on the right side of the screen that facilitates navigation between the different areas, allowing the operator to execute his tasks locally.

Within this supervision project, the DNP 3.0 and MMS under the IEC 61850 standard protocols were used and Touch screens were placed in each of the yards, which allow the deployment of the applications built in the PcVue software. The application collects data from NTX-U57 equipment used for the retrofit of the TELEGYR RTUs, that allows sending the RTU database in DNP 3.0 protocol to each of the associated displays.



View of HMI communications

As an architecture, a star connection was chosen, where the displays have an independent connection per yard, which has the advantage of not depending on the fiber optic links to the substation server room to collect data, but they work as STAND-ALONE equipment within each yard. Among the equipment integrated into the local HMIs are GE D25 bay controllers, protections (ABB-Siemens-General Electric, MICOM), CISCO communication switches and Schneider Electric ION meters. One of the great benefits of PcVue is that it is a multi-brand platform and easily adapts to equipment from any manufacturer.



General one-line diagram on Touch Screen

SCADATECH, the company integrating this project, states that they chose PcVue Solutions' proposal because it has native support for various electrical protocols.

This feature considerably increases the availability of the system, eliminating points of failure and reducing development time, since it is not necessary to configure different applications and interfaces, as it is generally done in the integration of communication protocols in the electrical sector. Among other elements, the PcVue platform has the highest quality standards within a highly competitive price, which made it easier for SCADATECH to be favored in the bidding process.

For Transelec, the commitment to the operational excellence of the electric transmission system and mainly the safety of collaborators and contractors of the company was a priority and PcVue has important elements to guarantee the computer security. So, it represents a key factor to facilitate the increase of the security level for the people and to improve the telecontrol in a significant way for all the voltage yards.

SCADATECH is currently developing an application with PcVue to extend local control to general monitoring of the entire substation from a centralized SCADA in Alto Jahuel, which will allow operators to make control decisions in the event of failure of Transelec's main SCADA. The application has a general display of the substation, in 3 total screens, including the 7 voltage yards, local monitoring of the networks through SNMP protocol, monitoring of all control equipment associated with the system (temperature and status of each of the more than 90 NTXU57 cards installed between all voltage yards) and general status of communications between the substation Gateway and the voltage yards.

IEC-60870-5-104 is being used as the communication protocol, since the monitoring is carried out with the same existing databases in Transelec's centralized SCADA, which will also allow verifying the correct operation of the communications within the system.

In fact, Transelec, together with its systems integrator SCADATECH, continue to bet on the reliability provided by the PcVue software for the electrical control and monitoring of the Alto Jahuel substation. Given its capacity to adapt to different ranges of computer architectures and the ease with which PcVue provides data analysis and, therefore, quick decision-making for the operators, the platform was expanded to other corners of the company.





## ARC Informatique

✉ [arcnews@arcinfo.com](mailto:arcnews@arcinfo.com)

🌐 [www.pcvue.com](http://www.pcvue.com)



ARC Informatique is ISO 9001,  
ISO 14001 and 27001 certified