



NEWS RELEASE

PcVue 17

Solutions for energy efficiency, systems performance and security



Open Connectivity SCADA Software Platform

Optimize energy. Maximize performance. Secure the infrastructure.

PcVue17 improves energy efficiency and elevates operational performance. By combining AI, real-time data analysis and processing, it automates routine tasks and enables intelligent control, increasing the effectiveness of both systems and teams.



ENERGY EFFICIENCY GOALS

Optimize control through enhanced insight to reduce consumption and costs, while ensuring regulatory compliance



OPERATIONAL PERFORMANCE

Enhance smart processing and control to improve the efficiency of both systems and teams



SYSTEM LONGEVITY

Strengthen scalability, reliability and security to ensure operational continuity

Backed by IEC 62443-4-1 and IEC 62443-4-2 certifications, PcVue 17 provides critical infrastructure operators with a platform built not only to perform, but to remain secure, trusted and cyber-resilient against evolving cyber threats.



Meeting critical systems challenges

Ensure operational continuity against cyber threats for critical infrastructure



In critical infrastructure, a cyberattack directly results in production shutdowns, operational losses, and safety risks.

ARC Informatique addresses these challenges with dual certification — IEC 62443-4-1 and IEC 62443-4-2 — the international reference standard for cybersecurity in industrial automation and control systems (IACS).

For PcVue users and partners, this certification provides greater confidence by delivering a platform that is not only high performing, but also secure, trusted and resilient against evolving cyber threats.



KEY TAKEAWAYS

Protect your critical infrastructure

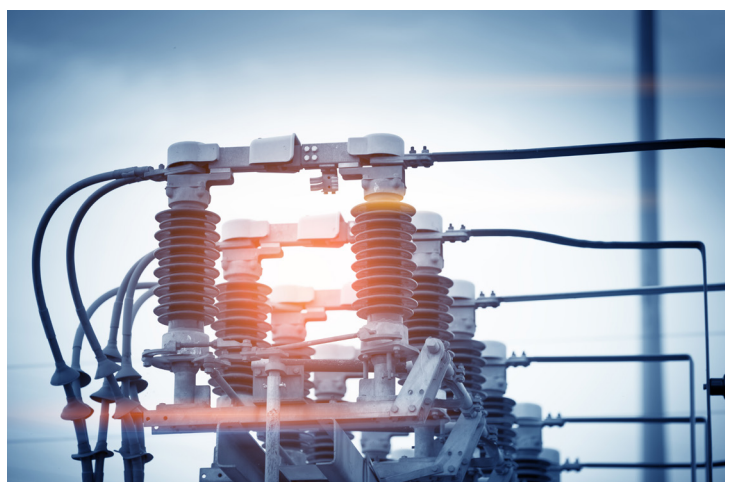
IEC 62443-4-1 (ML2) ensuring secure design and development

Keep your operations running

IEC 62443-4-2 (SL2) ensuring secure components and risk reduction at the product level

Ease compliance, build confidence

Meet regulatory requirements with a system you can trust



Turn energy data into immediate, actionable savings

The latest version of EmVue, fully integrated into PcVue 17, makes energy performance accessible to everyone—not just specialists. With real-time visualization and analysis, users can quickly identify inefficiencies and detect consumption drifts before they impact operations.



KEY TAKEAWAYS

- **Collect data in matters of hours**
Quick to deploy for non specialists
- **Get advanced insights**
Information that meet expert requirements
- **Understand energy usage**
Identify inefficiencies across your facility and operations

FEATURES

- ✔ Monitoring of all types of meters
- ✔ Manual or calculated meters
- ✔ Customizable charts
- ✔ Multi-connector support (CSV + PcVue)
- ✔ Retrieval of historical data over a selected period
- ✔ CSV export
- ✔ Energy data computation (filtering, conversion, scaling, resampling, interpolation)

Optimize processes and operations at scale

PcVue 17's intelligent assistance enables users to configure workflows and orchestrate complex processes through intuitive, minimal-code interfaces. By combining AI, real-time data analysis and processing, it automates routine tasks across teams and systems, and speeds up decision-making. From optimizing team schedules and balancing workloads to dynamically controlling equipment, PcVue17 helps you run your operation efficiently.



INTELLIGENT ASSISTANCE

- Automates tasks, analyzes data, enables intelligent control
- Combine AI, data analysis and processing
- Reduce repetitive work loads & accelerate decision-making



BUSINESS VALUE

- For operational teams & experts
- Lower development & maintenance cost
- Boost systems and team efficiency



KEY USE CASES

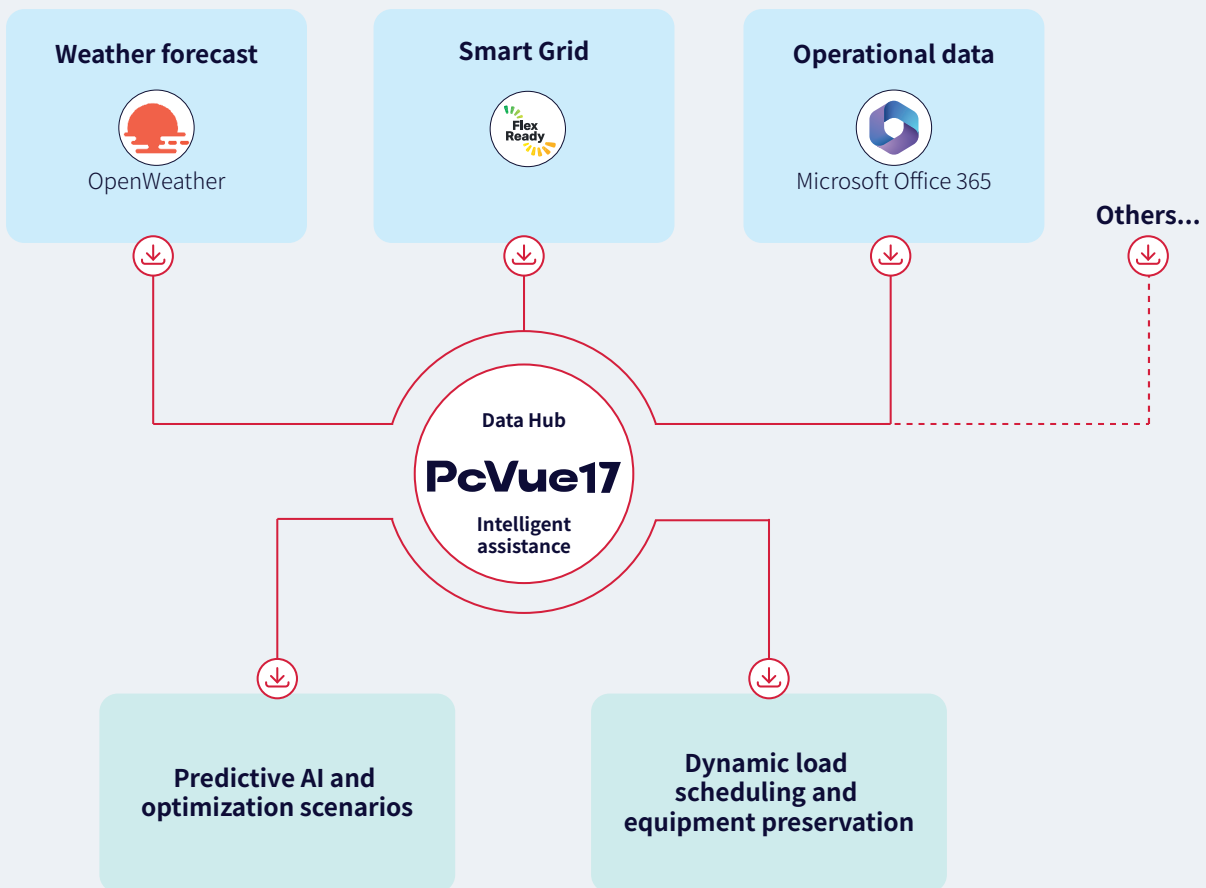
- Team scheduling & workload distribution
- Intelligent equipment control
- Operations optimization

Powering energy efficiency with AI

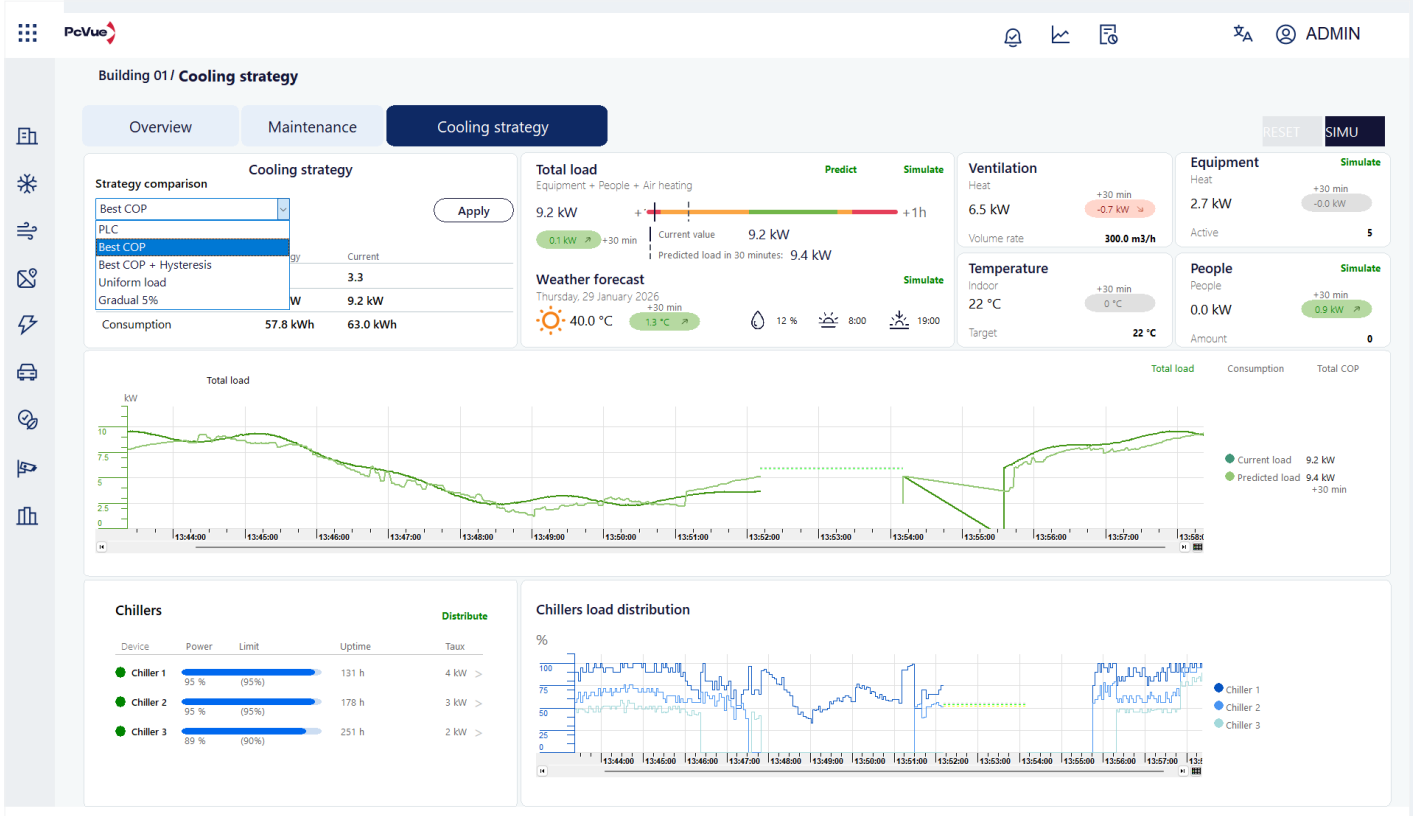
USE CASE

This use case demonstrates how PcVue 17 combines interoperability, AI-driven analysis, and predictive optimization to orchestrate and improve energy performance.

By combining real-time data, historical analysis, and contextual inputs such as weather, estimated electricity production, occupancy, or expected equipment loads, PcVue 17 not only anticipates energy needs but also predicts system behavior to detect inefficiencies before they impact operations.



Example of intelligent processing and control leveraging data from several sources and predictive AI



For example, in the case of chiller plants, the system can propose optimized control scenarios—such as load distribution, setpoint adjustments, or equipment sequencing—allowing operators to pilot installations more efficiently based on both current conditions and forecasted behavior.

Operators can then explore and compare multiple strategies — whether to reduce consumption, boost performance, or control costs — and select the most relevant approach for their goals. The result is more informed, flexible decision-making that helps teams act proactively rather than reactively, across cooling systems as well as other types of equipment.

THE CHALLENGE: REACTIVE INEFFICIENCY

Standard PID controls react too late to load changes, causing energy peaks, frequent equipment cycling and premature wear of equipment

THE SOLUTION: PREDICTIVE MANAGEMENT

PcVue leverages data and AI to forecast load and simulate optimization scenarios, allowing operators to take associated informed actions

THE IMPACT: PERFORMANCE & LONGEVITY

Energy: Higher COP and reduced consumption through load smoothing

Assets: Lower maintenance costs and extended equipment lifespan

Flexibility: Bridging the gap between energy producers and consumers



Streamline the design of your project

PcVue 17 helps you design faster and work more efficiently with an intuitive environment built on enriched object libraries, ready-to-use templates, and flexible modeling capabilities.



FROM FULL REGENERATION TO TARGETED UPDATES

With Application Architect, PcVue 17 introduces partial generation by instance, a powerful enhancement to streamline project engineering and maintenance

- Only the modified instances are regenerated
- The rest of the application remains unchanged
- Engineering cycles are significantly accelerated

EXPERIENCE MORE WITH IMPROVED UX/UI New object libraries

- Ready-to-use view templates
- Updated icons and symbols set

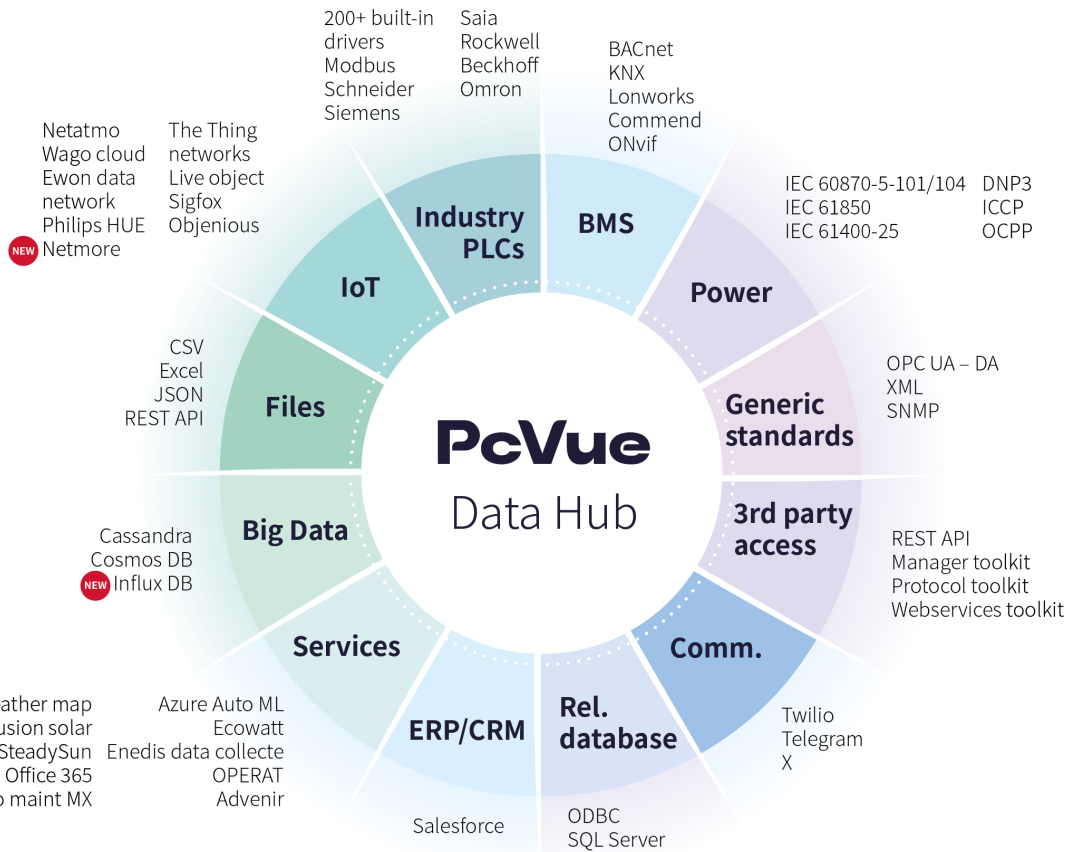


Unify Your Data Across All Your Systems

BREAKING SILOS: NEW CONNECTORS TO POWER YOUR DATA ECOSYSTEM

PcVue 17 expands its connectivity capabilities with new ADO.NET connectors, making it easier to integrate external data sources into your ecosystem without complexity.

Connect to platforms like Microsoft Office 365 to automate reporting, streamline collaboration, and keep teams aligned through familiar apps such as Outlook, Teams, or Planner. Leverage Influx DB to store and analyze large volumes of time-series data with speed. The Netmore connector further extends connectivity to IoT networks, enabling efficient collection and use of field data, particularly for energy and utility applications.



NETMORE
Direct access to sensors for industrial, urban, utilities (water, gas, energy), asset tracking, smart city applications, and more.

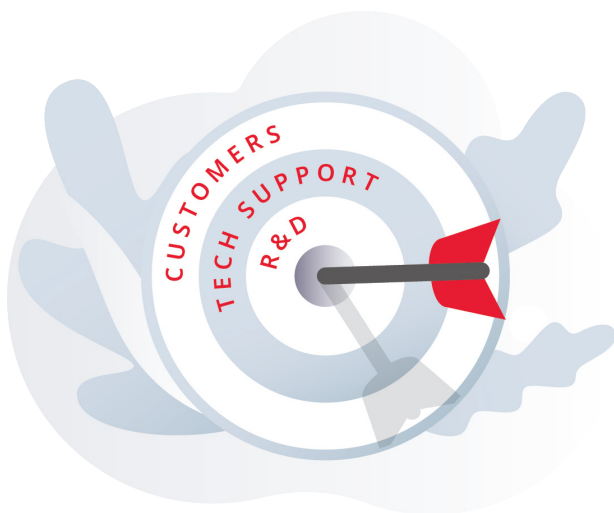
MICROSOFT OFFICE 365
Direct access to Outlook, Teams, SharePoint, Planner, To Do, users, and groups.

INFLUX DB
Direct access to time-series and pre-processed industrial data.

About us

ARC Informatique develops SCADA and BMS software for monitoring technical and industrial systems. The company delivers innovative solutions built on proven technologies. Its PcVue platform is recognized for reliability, robustness and security worldwide addressing several markets such as buildings, energy, infrastructure, transportation, water & waste, oil & gaz and industry.

ARC Informatique is certified **ISO 9001, ISO 14001, ISO 27001, IEC 62443**, ensuring quality, compliance and secure processes.



A CUSTOMER-ORIENTED APPROACH

Listen to and support our customers, develop and adapt our solutions through R&D and provide responsive technical support.

**GLOBAL PLAYER
LOCAL APPROACH**

16
STRATEGIC
BASES

50+
VAR
WORLDWIDE

200+
LOCAL SI
PARTNERS



**CONTINUOUS QUALITY
IMPROVEMENT**



ARC Informatique is IEC 61850 certified



News Release
PcVue 17

ARC Informatique

✉ arcnews@arcinfo.com

🌐 www.pcvue.com



ARC Informatique is ISO 9001,
ISO 14001 and 27001 certified